



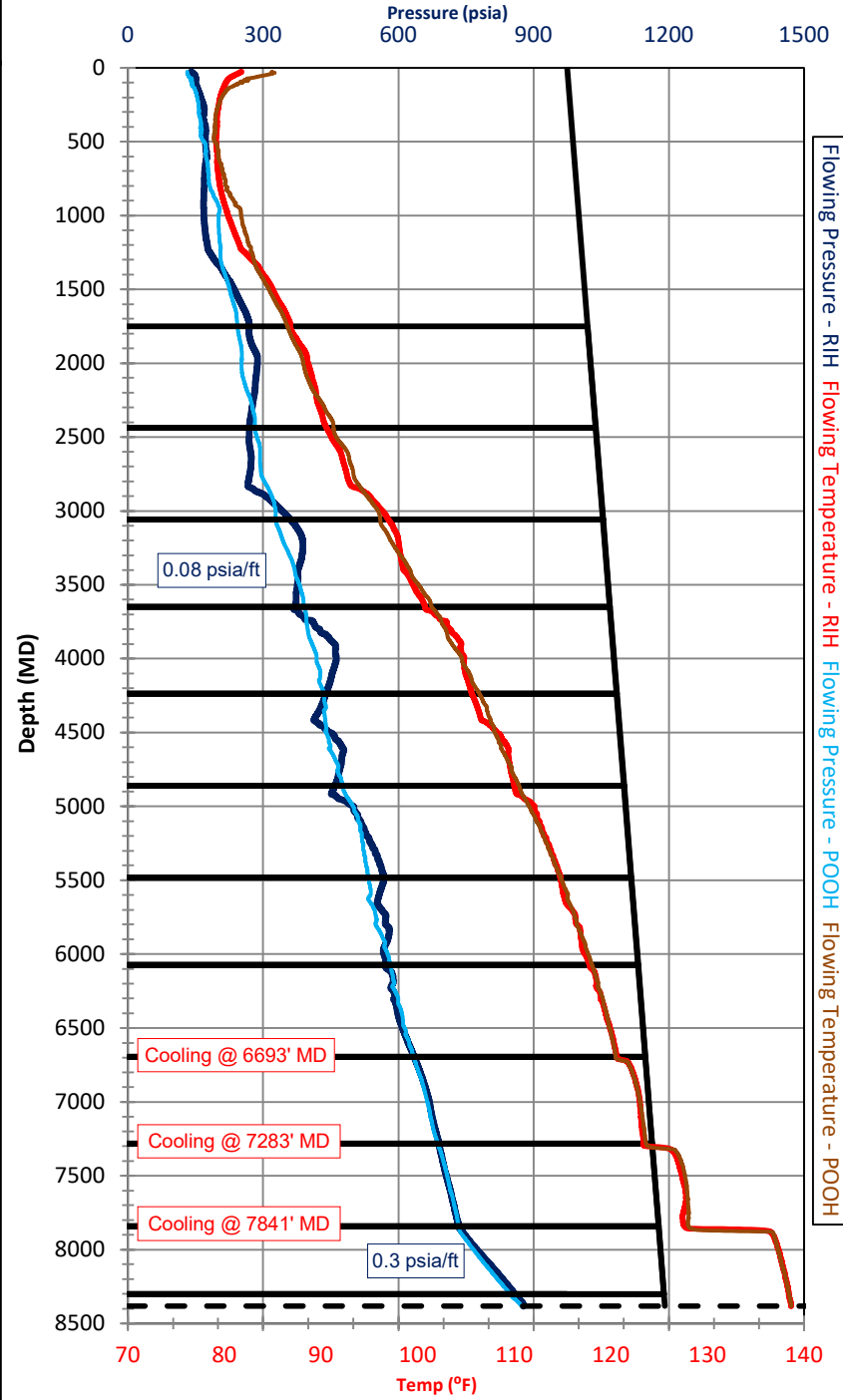
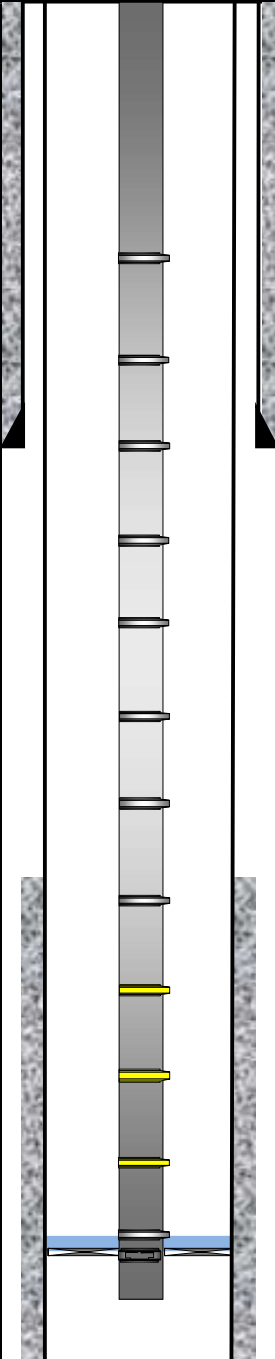
# Flowing Gradient Overview

Company:  
Field:  
Lease:  
Well No:

Well Test & Fluid Parameters				GLMs (MD/TVD)	
Qo	60	Total BBLs	167	1,750	1,750
Qw	107	GOR	2583	2,438	2,438
Qtg	1455	GLRi	8713	3,058	3,058
Qinj	1300	GLRf	928	3,648	3,648
% Cut	64	$\gamma_w$	1.050	4,238	4,238
FTP	140	$\gamma_o$	0.835	4,860	4,850
Pcsg	974	$\gamma_g$	0.725	5,483	5,463
Choke	100	Mixed Gradient	0.421	6,073	6,039
API	38.0	Fluid Level	8301	6,693	6,649
Psep	78	FBHP	990	7,283	7,233
Tsep	77	SBHP	N/A	7,841	7,784
Tfluid	82	$\Delta P$ @ Perfs	N/A	8,301	8,228
SITP	N/A	PI	N/A		
KB to THF	27	Shut-In Hours	N/A		
Tubing Size	2 7/8" 6.5#	Gauge Start Time	9/2/20 @ 8:18:00		
Casing Size	5 1/2" 20#	Shut In Well	N/A		
Packer MD	8382	Gauge Stop Time	9/2/20 @ 12:20:20		
Packer TVD	8303	Perforations MD	8732' - 18872'		
Gauge S.N.	5533	Perforations TVD	8579' - 8807'		
Calibration Date	5/1/2020	Mid-Perfs MD	13802		
Bottomhole Temp	140	Mid-Perfs TVD	8693		
Build-Up Hours	N/A	Reservoir			

**Comments:**

Legend	Special Notes:
Static Fluid Level	
Flowing Fluid Level	
Gas Lift Injection Point	
Mid-Perfs/Test Depth	
Extrapolated Mid-Perfs	
Altec Consultant On Location	
Date of Survey	

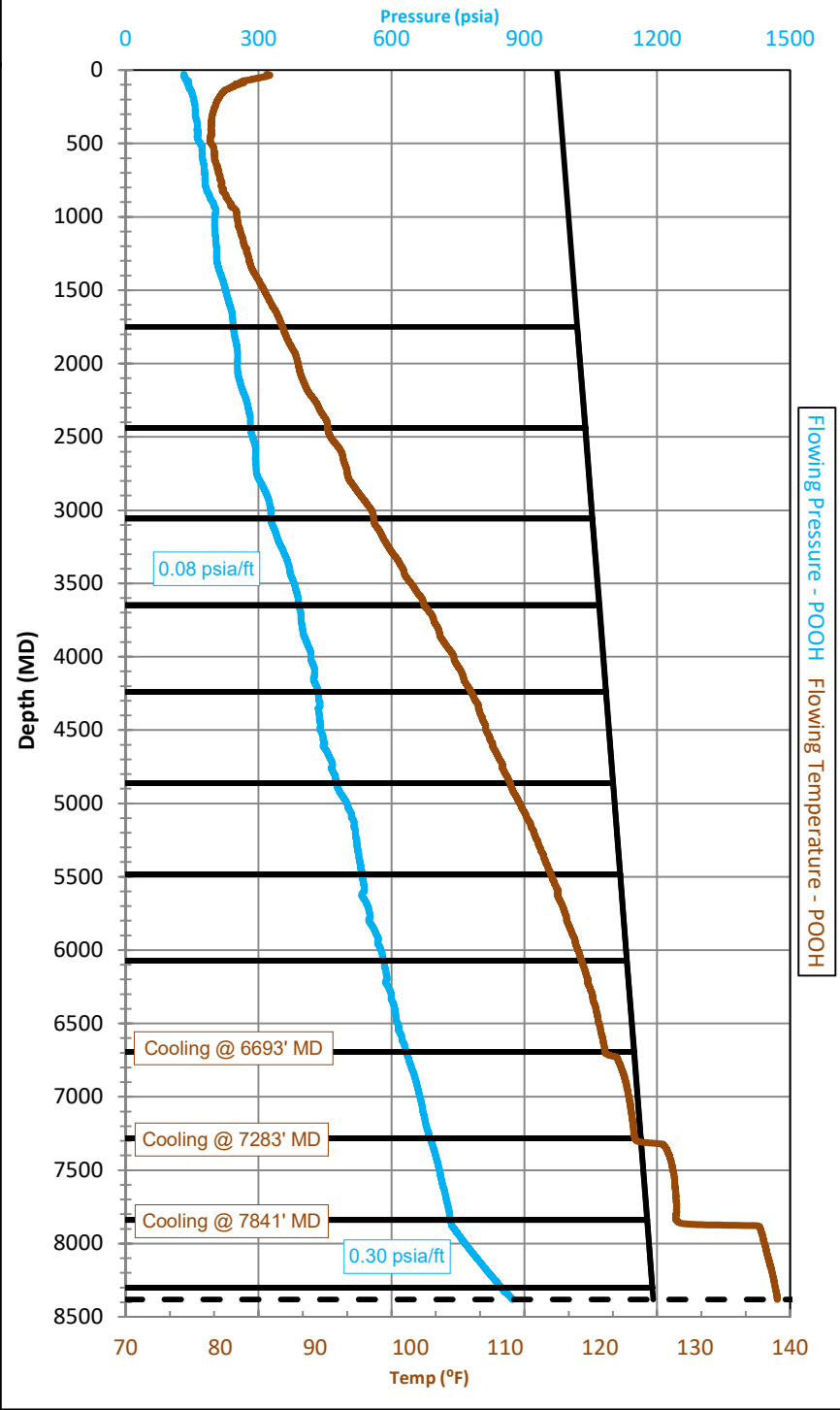
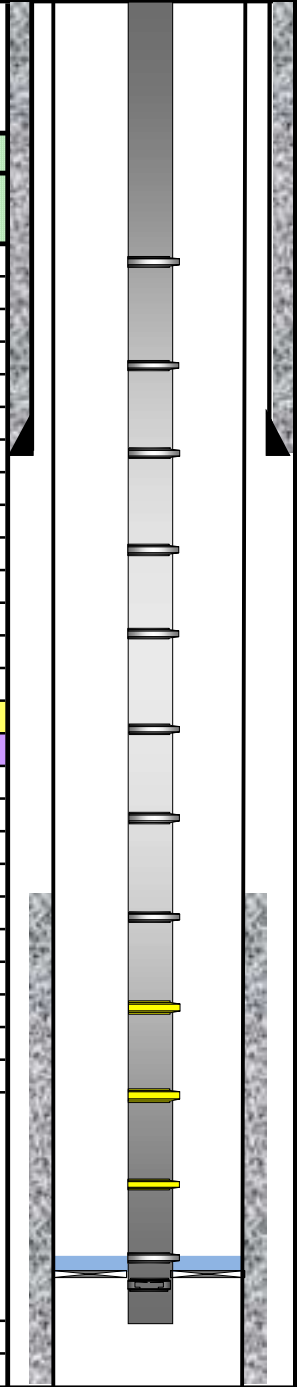




# Flowing Gradients POOH

Company:  
Field:  
Lease:  
Well No:

MD (Feet)	TVD (Feet)	Flowing Pulling Out of The Hole				Mandrel Information			
		Press (psi)	Gradient (psi / ft)	Temp (°F)	Gradient (°F / ft)	MD	TVD	Port Choke	Ptro
27	27	131.47		84.89		1,750	1,750	5/16 10	1315
1,000	1,000	201.41	0.072	81.71	-0.003	2,438	2,438	5/16 10	1330
1,750	1,750	243.13	0.056	86.51	0.006	3,058	3,058	3/16	1190
2,438	2,438	281.40	0.056	91.29	0.007	3,648	3,648	3/16	1180
3,058	3,058	327.64	0.075	96.12	0.008	4,238	4,238	3/16	1165
3,648	3,648	390.69	0.107	101.43	0.009	4,860	4,850	3/16	1150
4,238	4,238	434.43	0.074	106.38	0.008	5,483	5,463	3/16	1140
4,860	4,850	477.26	0.070	110.49	0.007	6,073	6,039	3/16	1125
5,483	5,463	534.02	0.093	114.79	0.007	6,693	6,649	3/16	1115
6,073	6,039	582.67	0.084	118.03	0.006	7,283	7,233	3/16	1105
6,693	6,649	633.02	0.083	120.49	0.004	7,841	7,784	3/16	1100
7,283	7,233	687.60	0.093	123.62	0.005	8,301	8,228	3/16	Orifice
7,841	7,784	733.07	0.083	128.01	0.008				
8,000	7,970	766.08	0.177	137.29	0.050				
8,356	8,304	865.64	0.298	138.61	0.004	<b>Test Depth</b>			
13,802	8,693	981.60	0.298	140.14	0.004	<b>Extrapolated Mid-Perfs</b>			



Legend	
Static Fluid Level	
Flowing Fluid Level	
Gas Lift Injection Point	
Mid-Perfs/Test Depth	
Extrapolated Mid-Perfs	
Altec Consultant On Location	0.00
Date of Survey	1/0/1900

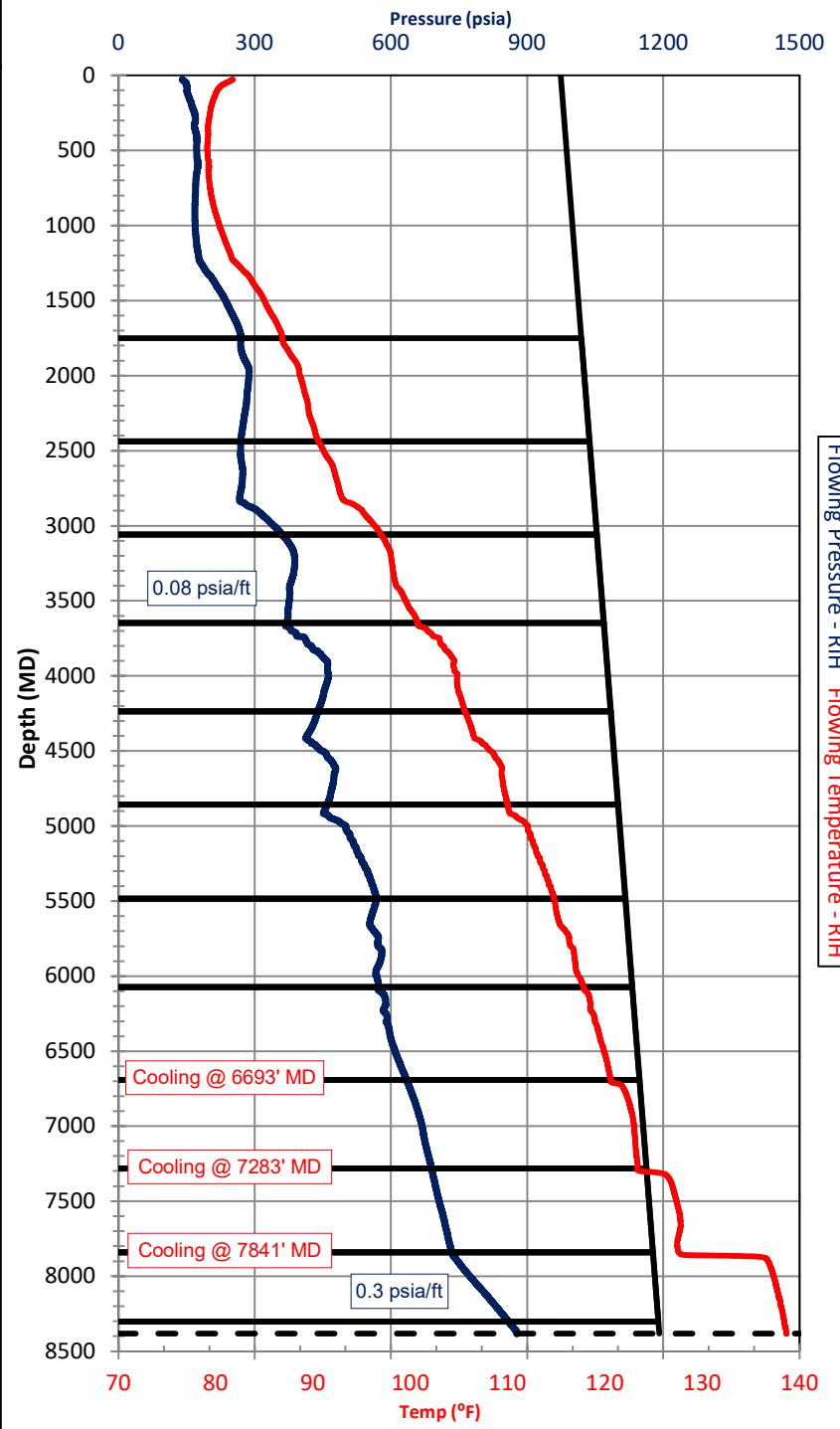
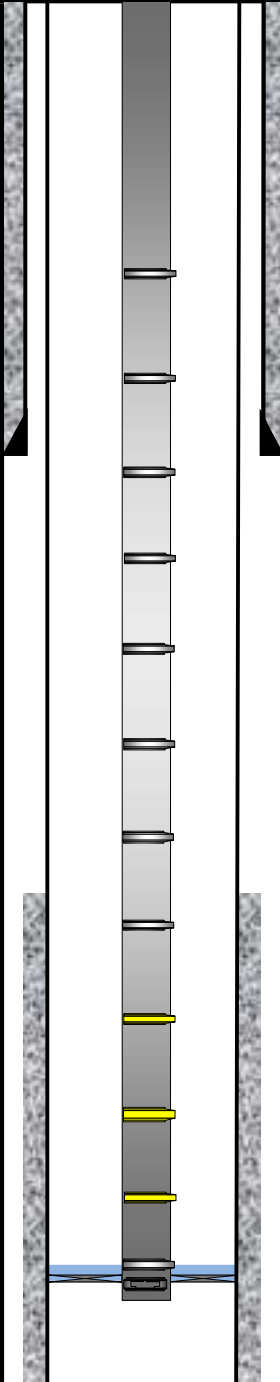
Special Notes:



# Flowing Gradients RIH

Company:  
Field:  
Lease:  
Well No:

MD (Feet)	TVD (Feet)	Flowing Running In The Hole				Mandrel Information			
		Press (psi)	Gradient (psi / ft)	Temp (°F)	Gradient (°F / ft)	MD	TVD	Port Choke	Ptro
27	27	140.07		81.78		1,750	1,750	5/16 10	1315
1,000	1,000	168.47	0.029	80.36	-0.001	2,438	2,438	5/16 10	1330
1,750	1,750	269.39	0.135	86.82	0.009	3,058	3,058	3/16	1190
2,438	2,438	269.15	0.000	90.57	0.005	3,648	3,648	3/16	1180
3,058	3,058	360.31	0.147	96.95	0.010	4,238	4,238	3/16	1165
3,648	3,648	370.23	0.017	100.75	0.006	4,860	4,850	3/16	1150
4,238	4,238	438.94	0.116	105.60	0.008	5,483	5,463	3/16	1140
4,860	4,850	459.35	0.033	110.00	0.007	6,073	6,039	3/16	1125
5,483	5,463	567.51	0.176	114.76	0.008	6,693	6,649	3/16	1115
6,073	6,039	572.33	0.008	117.80	0.005	7,283	7,233	3/16	1105
6,693	6,649	634.32	0.102	120.59	0.005	7,841	7,784	3/16	1100
7,283	7,233	689.33	0.094	123.33	0.005	8,301	8,228	3/16	Orifice
7,841	7,784	733.68	0.080	127.58	0.008				
8,000	7,970	773.59	0.215	137.35	0.053				
8,356	8,304	873.69	0.300	138.61	0.004	<b>Test Depth</b>			
13,802	8,693	990.39	0.300	140.17	0.004	<b>Extrapolated Mid-Perfs</b>			



Legend
Static Fluid Level
Flowing Fluid Level
Gas Lift Injection Point
Mid Perfs/Test Depth
Extrapolated Mid-Perfs
Altec Consultant On Location
Date of Survey

Special Notes:

Flowing Pressure - RIH Flowing Temperature - RIH