



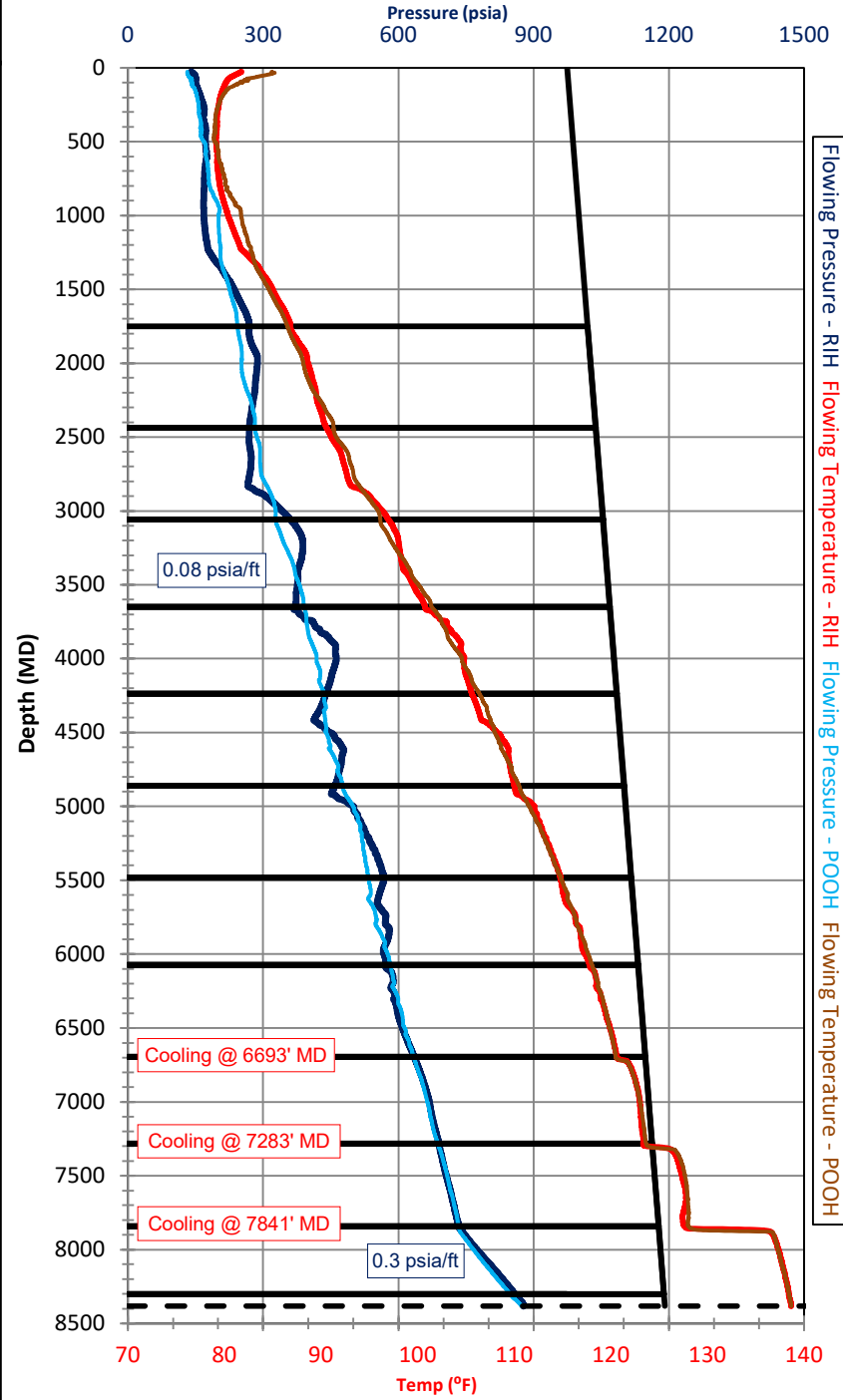
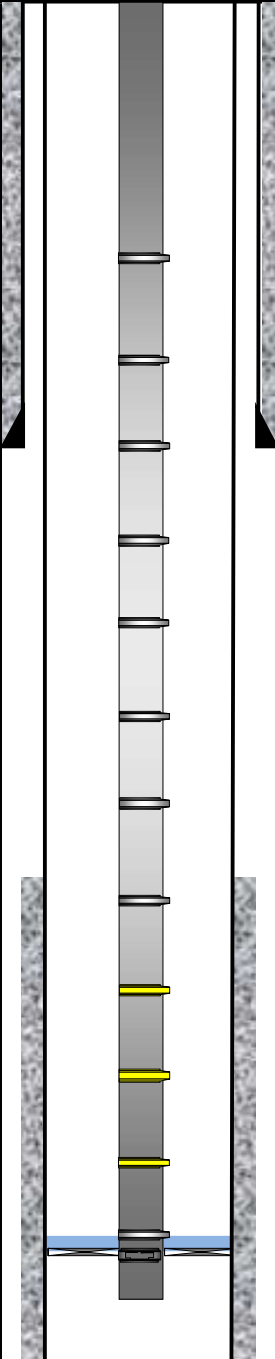
Flowing Gradient Overview

Company:
Field:
Lease:
Well No:

Well Test & Fluid Parameters				GLMs (MD/TVD)	
Qo	60	Total BBLs	167	1,750	1,750
Qw	107	GOR	2583	2,438	2,438
Qtg	1455	GLRi	8713	3,058	3,058
Qinj	1300	GLRf	928	3,648	3,648
% Cut	64	γ_w	1.050	4,238	4,238
FTP	140	γ_o	0.835	4,860	4,850
Pcsg	974	γ_g	0.725	5,483	5,463
Choke	100	Mixed Gradient	0.421	6,073	6,039
API	38.0	Fluid Level	8301	6,693	6,649
Psep	78	FBHP	990	7,283	7,233
Tsep	77	SBHP	N/A	7,841	7,784
Tfluid	82	ΔP @ Perfs	N/A	8,301	8,228
SITP	N/A	PI	N/A		
KB to THF	27	Shut-In Hours	N/A		
Tubing Size	2 7/8" 6.5#	Gauge Start Time	9/2/20 @ 8:18:00		
Casing Size	5 1/2" 20#	Shut In Well	N/A		
Packer MD	8382	Gauge Stop Time	9/2/20 @ 12:20:20		
Packer TVD	8303	Perforations MD	8732' - 18872'		
Gauge S.N.	5533	Perforations TVD	8579' - 8807'		
Calibration Date	5/1/2020	Mid-Perfs MD	13802		
Bottomhole Temp	140	Mid-Perfs TVD	8693		
Build-Up Hours	N/A	Reservoir			

Comments:

Legend	Special Notes:
Static Fluid Level	
Flowing Fluid Level	
Gas Lift Injection Point	
Mid-Perfs/Test Depth	
Extrapolated Mid-Perfs	
Altec Consultant On Location	
Date of Survey	





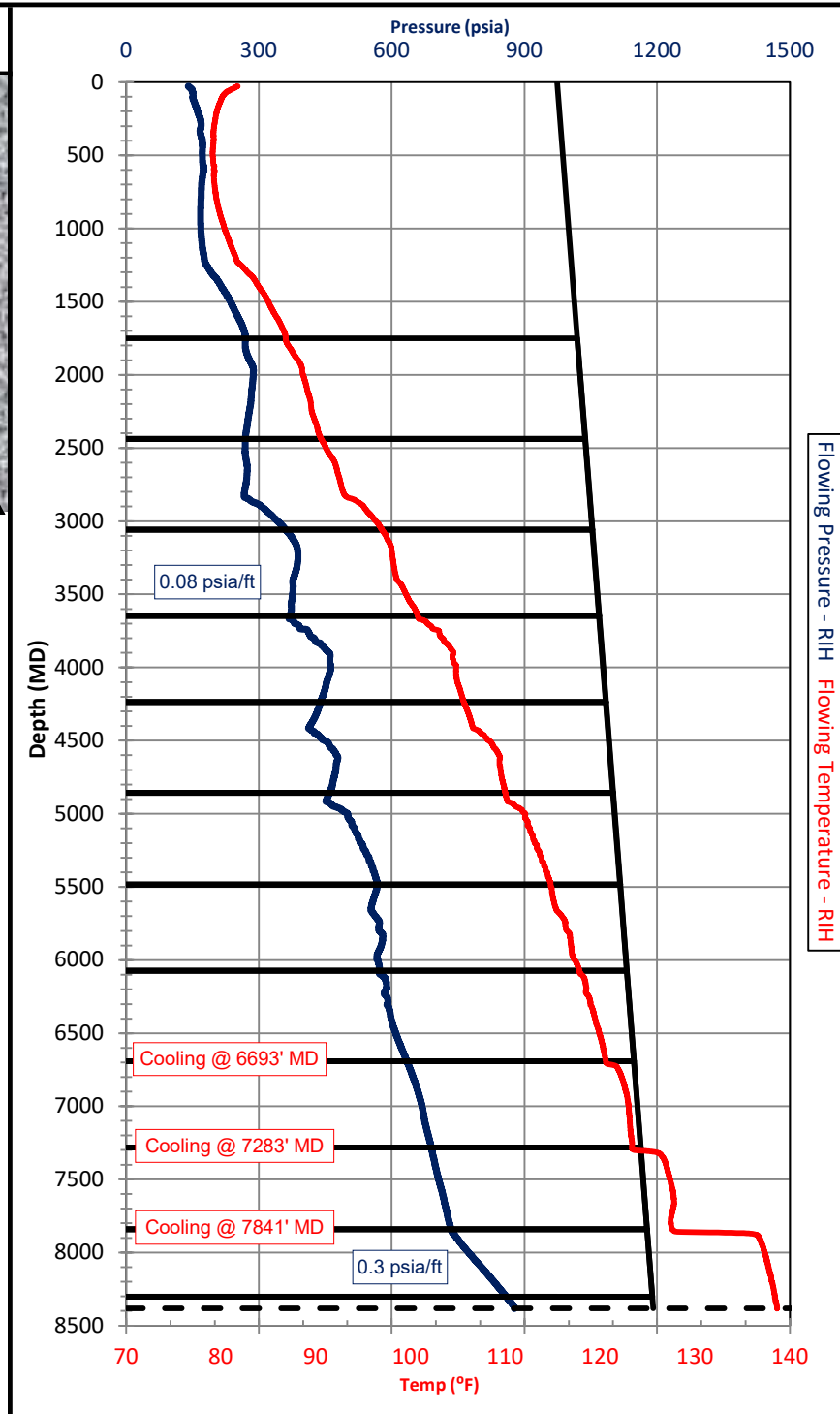
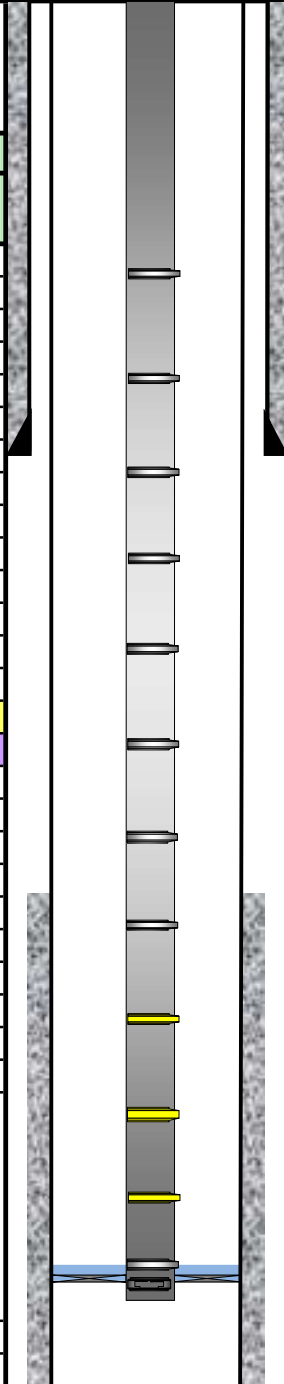
Flowing Gradients RIH

Company:
Field:
Lease:
Well No:

MD (Feet)	TVD (Feet)	Flowing Running In The Hole				Mandrel Information			
		Press (psi)	Gradient (psi / ft)	Temp (°F)	Gradient (°F / ft)	MD	TVD	Port Choke	Ptro
27	27	140.07		81.78		1,750	1,750	5/16 10	1315
1,000	1,000	168.47	0.029	80.36	-0.001	2,438	2,438	5/16 10	1330
1,750	1,750	269.39	0.135	86.82	0.009	3,058	3,058	3/16	1190
2,438	2,438	269.15	0.000	90.57	0.005	3,648	3,648	3/16	1180
3,058	3,058	360.31	0.147	96.95	0.010	4,238	4,238	3/16	1165
3,648	3,648	370.23	0.017	100.75	0.006	4,860	4,850	3/16	1150
4,238	4,238	438.94	0.116	105.60	0.008	5,483	5,463	3/16	1140
4,860	4,850	459.35	0.033	110.00	0.007	6,073	6,039	3/16	1125
5,483	5,463	567.51	0.176	114.76	0.008	6,693	6,649	3/16	1115
6,073	6,039	572.33	0.008	117.80	0.005	7,283	7,233	3/16	1105
6,693	6,649	634.32	0.102	120.59	0.005	7,841	7,784	3/16	1100
7,283	7,233	689.33	0.094	123.33	0.005	8,301	8,228	3/16	Orifice
7,841	7,784	733.68	0.080	127.58	0.008				
8,000	7,970	773.59	0.215	137.35	0.053				
8,356	8,304	873.69	0.300	138.61	0.004	Test Depth			
13,802	8,693	990.39	0.300	140.17	0.004	Extrapolated Mid-Perfs			

Legend
Static Fluid Level
Flowing Fluid Level
Gas Lift Injection Point
Mid Perfs/Test Depth
Extrapolated Mid-Perfs
Altec Consultant On Location
Date of Survey

Special Notes:





Flowing Gradients POOH

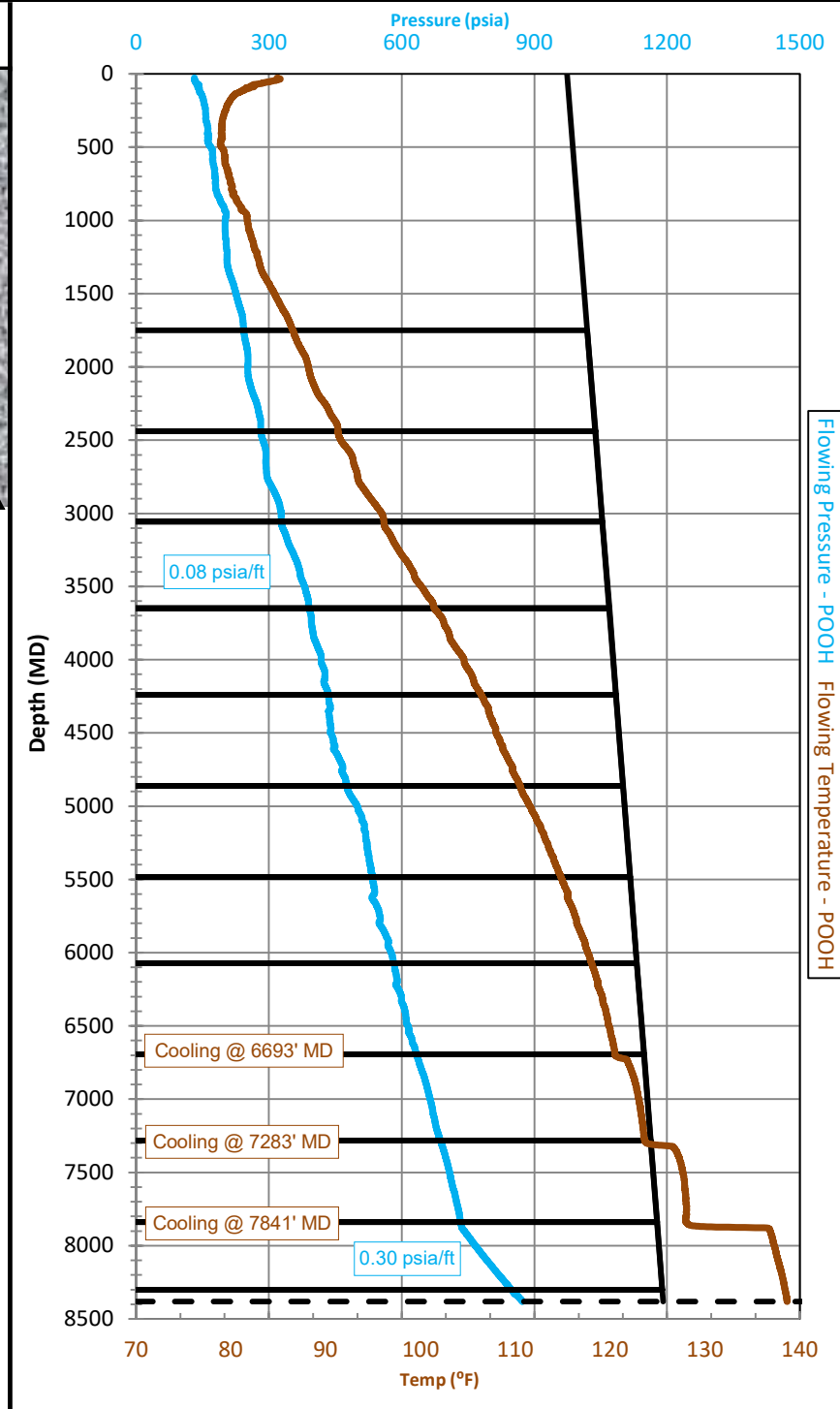
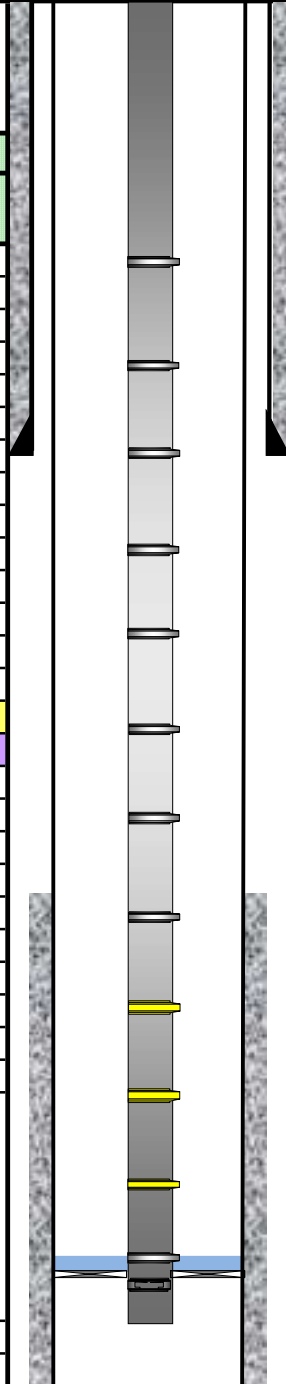
Company:
Field:
Lease:
Well No:

MD (Feet)	TVD (Feet)	Flowing Pulling Out of The Hole				Mandrel Information			
		Press (psi)	Gradient (psi / ft)	Temp (°F)	Gradient (°F / ft)	MD	TVD	Port Choke	Ptro
27	27	131.47		84.89		1,750	1,750	5/16 10	1315
1,000	1,000	201.41	0.072	81.71	-0.003	2,438	2,438	5/16 10	1330
1,750	1,750	243.13	0.056	86.51	0.006	3,058	3,058	3/16	1190
2,438	2,438	281.40	0.056	91.29	0.007	3,648	3,648	3/16	1180
3,058	3,058	327.64	0.075	96.12	0.008	4,238	4,238	3/16	1165
3,648	3,648	390.69	0.107	101.43	0.009	4,860	4,850	3/16	1150
4,238	4,238	434.43	0.074	106.38	0.008	5,483	5,463	3/16	1140
4,860	4,850	477.26	0.070	110.49	0.007	6,073	6,039	3/16	1125
5,483	5,463	534.02	0.093	114.79	0.007	6,693	6,649	3/16	1115
6,073	6,039	582.67	0.084	118.03	0.006	7,283	7,233	3/16	1105
6,693	6,649	633.02	0.083	120.49	0.004	7,841	7,784	3/16	1100
7,283	7,233	687.60	0.093	123.62	0.005	8,301	8,228	3/16	Orifice
7,841	7,784	733.07	0.083	128.01	0.008				
8,000	7,970	766.08	0.177	137.29	0.050				
8,356	8,304	865.64	0.298	138.61	0.004				
13,802	8,693	981.60	0.298	140.14	0.004				

Legend
Static Fluid Level
Flowing Fluid Level
Gas Lift Injection Point
Mid-Perfs/Test Depth
Extrapolated Mid-Perfs
Altec Consultant On Location
Date of Survey

Special Notes:

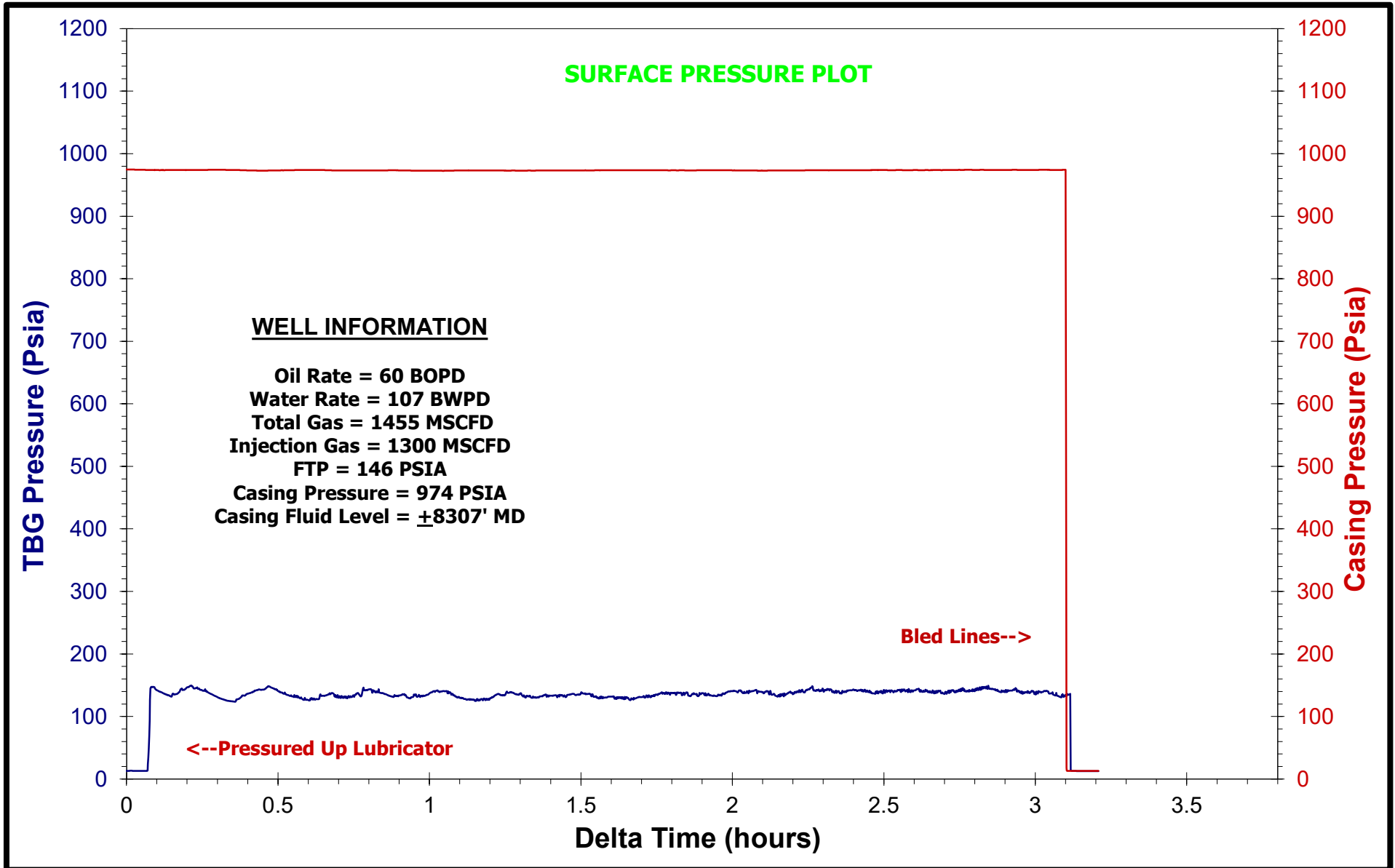
0.00
1/0/1900





Production Enhancement Services

Company:
Field:
Lease:
Well No:
Test Date:
Perforations:
Reservoir:





Production Enhancement Services

SURVEY OVERVIEW PLOT

Pressure/Temperature

Company:
 Field:
 Lease:
 Well No:
 Test Date:
 Tool Serial #:
 Perforations:
 Reservoir:

